

## Project

Bridge Quay - Bristol  
Asbestos Removal, Strip Out and Demolition

## Client

Mi-Space UK Ltd

## Value

£380,000

## Summary

Conversion of this former office block building into 59 residential apartments in this stunning waterfront development close to the Bristol Bridge.

Maylarch was contracted to take the six story building back to its original shell, ready for redevelopment. Our work consisted of a full internal soft strip including hard demolitions of internal concrete staircases, reinforced concrete roof top, plant room and removal of all external curtain walls and windows.

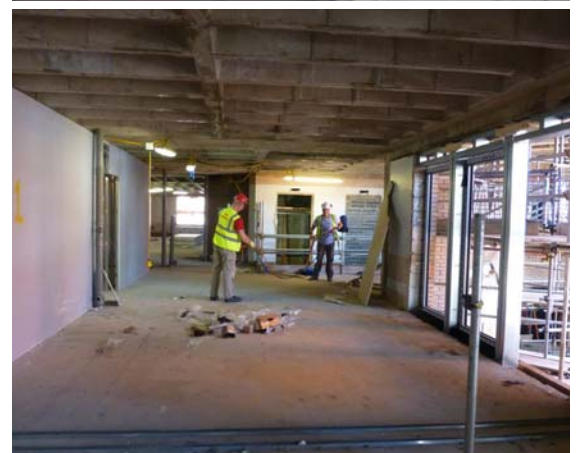
## Challenge

This site presented several challenges. The main one was the site location in a busy city centre, with a very small compound area. There were also specific staff safety considerations to take into account due to the adjacent river flowing right along the building.

This safety aspect had to be observed while maintaining the pace on this large soft strip work over multiple floors. A good coordination with other contractors, ensured that the initial programme was respected.

## Outcome

Our work was completed on time and to the satisfaction of Mi-Space's expectations. This allowed for a quick and smooth transition to the next development phase.



## Speak to our divisional manager

Kevin Bowerman - 01865 883829

[enquiries@maylarch.co.uk](mailto:enquiries@maylarch.co.uk)